

China's National Sword Changing Our Recycling Markets

Up until just a few weeks ago, China was the single largest market for the world's recyclables. About two-thirds of the yogurt cups, soda bottles and magazines tucked into curbside recycling bins and crushed into bales were loaded onto cargo ships bound for China and other countries, where they were remanufactured into shiny new products and shipped back to the U.S. But China has its own refuse to worry about, and officials there announced last year that they no longer wanted to import the world's trash, especially the plastic kind. They have a new President and a vision called "BLUE SKY". This policy is now in play and new strict environmental regulations are being put in place to have clean air by 2050. We applaud them for taking the first steps to a



better environment. However this has deeply impacted life as we know it for the recycling industry. In May, they temporarily shut down all imports of recyclable material and warned that it would impose tough, permanent restrictions by the end of the year. These restrictions are that all products would need to be cleaned to less than 0.5% contamination and some products they will actually no longer accept. All of the U.S. and other nations are scrambling to figure out what to do with the rapidly growing recyclable inventory.

Meanwhile, bales of mixed paper (cereal boxes, junk mail and the like) and plastics are piling up in warehouses up and down the state. Plastic bags have always been problematic for us so we are now discontinuing trying to recycle them. Our goal right now is to clean up the

recycling stream and we have just slightly revised the list of materials accepted. Please re-read this current listing of products and the list of items we consider contamination. Contamination items go into the brown garbage carts. We will be starting a sticker campaign and will be placing this new decal on all recycling carts in our service area as part of the on-going re-education program. For now, "when it doubt throw it out". Please give us a call if you have questions or concerns about what to recycle.

DO NOT PLACE THESE ITEMS IN YOUR BLUE CART

- NO Electronics, cell phones, computer parts, cords, batteries or light bulbs
- NO Plastic bags, green or black bags, Styrofoam, bubble wrap, plastic containers contaminated with food or oil
- NO Milk cartons or soup cartons, paper products contaminated by food or oil, tissues, hard covered books, binders
- NO Blankets, shoes, clothing, belts, furniture, hoses
- NO Drinking glass, Pyrex, tile, dishes, ceramics

Have a safe and happy 4th of July!

We will be closed Wednesday, July 4th and Labor Day Monday, September 3rd in celebration of our national holidays. All services will be one day late.

HAZARDOUS WASTE COLLECTION



The County of Lake is partnering with Quackenbush Mountain Resource Recovery and Compost Facility adjacent to East Lake Landfill, and with Lake County Waste Solutions Transfer Station in Lakeport, for monthly Household Hazardous Waste Collection sites. Collection events will rotate each month between the two locations.

- No cost to residents
- Maximum 15 gallons
- Businesses by appointment only
- Fees apply

JULY FRIDAY 20
For more information, call the Recycling Hot Line @ 263-1980 or visit the website:
www.recycling-makes-cents@ca.us.gov

COLLECTION DATES:

HHW Events at the South Lake/Quackenbush Facility, next to East Lake Landfill

- Friday and Saturday 9:00am-1:00pm
- July 20-21
 - September 21-22
 - October 13th Only
19287 Hartman Road
Hidden Valley Lake
by Post Office Boxes
 - November 16-17

HHW Events at Lake County Waste Solutions - Transfer Station in Lakeport

- Friday and Saturday 9:00am-1:00pm
- August 17-18
 - October 19-20
 - December 15th Only

South Lake Refuse Rate Adjustment July 1, 2018

Residential, Commercial and Roll-Off rates are expected to increase 13.39% on July 1, 2018. The rate increase is due to direct and indirect rate impacts.

Direct rate impacts as a result of the expected increases are: CPI increase of 3.25%; extraordinary costs increase (truck capital, insurance, etc.) of 4%.

Indirect rate impacts as a result of the expected increases are: Eastlake Landfill tip rate increase of 16% or a rate impact of 1.53%; County Franchise Fee increase from 5% to 10% or a rate impact of 5.33%; County Disposal Based Franchise Fee elimination or a rate decrease of 0.60%; County Vehicle Impact Fee decrease of 0.12%.

South Lake Refuse & Recycling Bulky Item Pick-up Schedule

Please call to let us know you will have bulky items in advance of the listed dates, 994-8613.

Free items include: BBQ, bed frame, bicycle, box spring, carpet & padding (no greater than 6ft long and 1ft diameter rolled up), computer, couch, furniture, household electronics, large toys, plumbing fixtures, sporting equipment, etc. Please see our website for a complete listing.

Fee items include: \$10 fee for air conditioner, dishwasher, dryer, refrigerator or freezer, stove, oven, washing machine or water heater.

The following items are NOT ACCEPTED: Concrete, dirt, hazardous waste, paint, piano, trash, tree stumps and yard debris.

If you have questions about the acceptability of items not listed above, please call the Recycling Hotline: 236-1980. Visit www.recycling.co.lake.ca.us or call South Lake Refuse & Recycling, 994-8613.

DON'T GET STUCK!

DISPOSE SHARPS PROPERLY AT THE FOLLOWING LOCATION:
Home-generated only - no business wastes

South Lake Recycling Center
Located at the Lake County Landfill, Davis Street
Open Every Day 7:30am to 3pm

Call 994-8614 for more information about how to properly prepare SHARPS for collection. We have free home SHARPS Collection Containers!

Improper disposal of needles, lancets, and other sharps can cause injury and spread disease.

JULY	6	Cobb
	13	Lower Lake
	20	Middletown/Hidden Valley
	27	Clearlake Riviera
AUGUST	3	Cobb
	10	Lowerlake
	17	Middletown/Hidden Valley
	24	Clearlake Riviera
SEPTEMBER	7	Cobb
	14	Lower Lake
	21	Middletown/Hidden Valley
	28	Clearlake Riviera

2 Bulky items per year.

If you have extra garbage out for pick up, you must call our office in advance to authorize the pick up and confirm the fee.

RECYCLE • RECICLA



Flattened
Aplanado



Place in clear
plastic bag.
Poner en bolsas
de plástico claras.



No sharp objects
No objetos filosos



Empty only!
Non-hazardous materials.
Solamente materiales que no sean
toxicosor peligrosos.



ONLY include ITEMS LISTED ABOVE. Unsure? Call and ask, 707-994-8613.
Solamente incluir los artículos que se encuentran en la lista de arriba. Si no estas seguro, llama y pregunta 707-994-8613.

IN THE GREEN CART = CLEAN GREEN MATERIALS



If you have
extra garbage
out for pick
up, you must
call our office
in advance to
authorize the
pick up and
confirm the fee.

✓ **YARD TRIMMINGS**
(leaves, grass, shrubs, hedges, etc.)

✓ **WOOD: untreated, unpainted, metal-free**

✓ **FALLEN FRUIT FROM TREES**

Lid must fully close, no pieces of trees/bush
larger than 6" diameter.

Do Not Include:

- ✗ Plastic bags
- ✗ Household garbage
- ✗ Dog/cat wastes
- ✗ Painted/Pressure-treated wood
- ✗ Food
- ✗ Dirt
- ✗ Horse manure

IN THE BROWN CART = TRASH

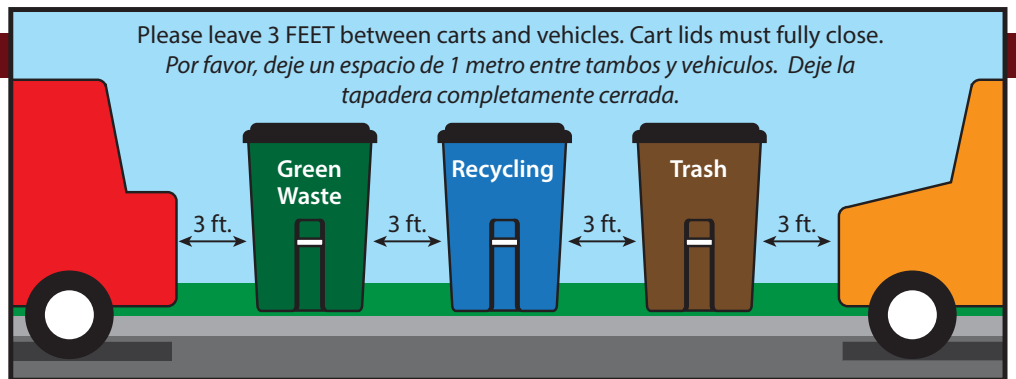


Make sure lid is fully
closed.

✗ No Hazardous Wastes
accepted.

Call 1-800-984-9661 for
Hazardous Waste Disposal

Please leave 3 FEET between carts and vehicles. Cart lids must fully close.
Por favor, deje un espacio de 1 metro entre tambos y vehiculos. Deje la
tapadera completamente cerrada.



Materials we Recycle at Quackenbush Compost

Clean Green Organic Material: Green organic plant material such as (but is not limited to) tree trimmings, grass, leaves, etc. Green organics must not contain any contamination such as household trash, plastics, etc. Processing Cost \$37.75 Per Ton. Minimum Charge \$5.00.

Clean Construction Wood: Any clean wood, nails OK. Wood that is not recyclable includes (but is not limited to) painted wood, any kind of treated wood, particle board, etc. Processing Cost \$37.75 Per Ton. Minimum Charge \$5.00.

Clean Concrete: Concrete must be separate from soils and dirt or higher charges may apply. Small pieces of metal and rebar OK. Processing Cost \$9.50 Per Ton. Minimum Charge \$7.50.

Clean Asphalt: Asphalt must be separate from soils and dirt or higher charges may apply. Processing Cost \$9.50 Per Ton. Minimum Charge \$7.50.

Clean Dirt: Any soil or dirt free of contaminants such as trash, concrete, asphalt, green waste, etc. Processing Cost \$7.50 Per Ton.

Our facility offers blends of organically approved and listed compost, topsoil and two sizes of wood chips for your landscaping, gardening and agricultural needs. Delivery is available.



**QUACKENBUSH RESOURCE
RECOVERY & COMPOST FACILITY**
Come visit us and see our organic materials.

16520 Davis Street
Clearlake, CA 95422
Phone (707) 995-0104

compost has dark rich color and fine texture. The compost is screened to 3/8" minus. Price \$29.25 Per Ton, Plus Tax.

2. Quackenbush Compost: Is purely green-material compost. Composted for several months to give a rich color and a medium texture. Also screened to 3/8" minus. Price \$29.25 Per Ton, Plus Tax.

3. Topsoil: Topsoil is mixed with 60% compost and 40% soil to be extra rich in organic matter. Great for new lawns, gardens and other applications. Price \$32.25 Per Ton, Plus Tax.

4. Premium Topsoil: 5/16" lava rock is added to our regular topsoil mixture to increase the soil's porosity and increase water infiltration. Price \$36.50 Per Ton, Plus Tax.

5. Wood Chips 3/8" Minus: Finely ground and screened to 3/8" minus. Good for topdressing and mulching. Price \$29.50 Per Ton, Plus Tax.

6. Wood Chips 1" has a golden color coarse texture and makes a good topdressing. Price \$29.50 Per Ton, Plus Tax.

1. Quackenbush Blended Compost: Grape pomace is added to our Quackenbush compost which increases the nutrient content of the compost. The